



HAL
open science

Hybrid Adaptive Control of the Boost Converter

Sabrina Hadjeras, Carolina Albea-Sanchez, Germain Garcia

► **To cite this version:**

Sabrina Hadjeras, Carolina Albea-Sanchez, Germain Garcia. Hybrid Adaptive Control of the Boost Converter. 2017. hal-01588081v1

HAL Id: hal-01588081

<https://laas.hal.science/hal-01588081v1>

Preprint submitted on 15 Sep 2017 (v1), last revised 10 Nov 2017 (v2)

HAL is a multi-disciplinary open access archive for the deposit and dissemination of scientific research documents, whether they are published or not. The documents may come from teaching and research institutions in France or abroad, or from public or private research centers.

L'archive ouverte pluridisciplinaire **HAL**, est destinée au dépôt et à la diffusion de documents scientifiques de niveau recherche, publiés ou non, émanant des établissements d'enseignement et de recherche français ou étrangers, des laboratoires publics ou privés.

Hybrid Adaptive Control of the Boost Converter

S. Hadjeras, C. Albea Sanchez and G. Garcia

Abstract—This work proposes a control law for the boost converter with unknown constant resistive load. It focuses on Hybrid Dynamical System (HDS) theory, which considers the voltage and current signals as continuous-time variables and the switching signal as discrete-time variable. In several applications the voltage has to be constant. To ensure that the voltage value is robust with respect to any reference, an adaptive scheme is proposed. This adaptation is accomplished using a state observer and assuming that all states are accessible. Then, the full system stability can be established by using a singular perturbation analysis. The hybrid adaptive controller is tested in simulations.

Index Terms—Hybrid dynamical system, adaptive control, boost converter, singular perturbation analysis.

I. INTRODUCTION

Boost converter systems are very common in power electronics. They allow to generate an output voltage larger than its input one. The control problem of this converter were largely studied by the electronic and automatic communities, by using averaged models, whose controlled signal is generally obtained by a Pulse Width Modulation (PWM) with fixed frequency [1],[2], generating a limitation in its performance due to the difficulty for quantifying the precision of the approximation obtained by the averaging procedure and the fact that the control laws properties are only valid locally .

Nowadays, there is another attempt to control this kind of converter taking into account the real nature of the system signals, that means, the fact that the voltage and current signals are continuous-time and the switching signals are discrete-time. This consideration captures the switching dynamics and achieves a new generation of converters that can operate in varying frequency. This is the case of the sliding-mode control [3] and hybrid dynamical control [4], [5], [6] for the boost converter.

Some adaptive controls for the boost converter were proposed by using also averaged models, as in [7], where a *Simple Adaptive Control* (SAC) was designed by using a proportional and integral controller. In [8], the authors used Lyapunov design techniques. In [9],[10] adapting-backstepping was used to update all the parameters.

S. Hadjeras and C. Albea are with CNRS, LAAS, 7 avenue du colonel Roche, F-31400 Toulouse, France and Univ. de Toulouse, UPS, LAAS, F-31400 Toulouse France shad-jera,calbea@laas.fr

G. Garcia is with both CNRS, LAAS, 7 avenue du colonel Roche, F-31400 Toulouse, France and Univ. de Toulouse, INSA, LAAS, F-31400 Toulouse France garcia@laas.fr

On the other hand, in [11], an adaptive sliding mode control was designed, however, and to the authors best knowledge, to regard that the load is unknown and constant is not done in the context of hybrid dynamical paradigm.

In this work, we extend the hybrid dynamical controller proposed in [4], designing a hybrid adaptive control for the boost converter with unknown resistive load. This controller must regulate the voltage in a desired value. This adaptation is fed by a state observer designed under the consideration that the states are measurable. Then, uniformly locally asymptotically stability is ensured based on scale-time separation and using a singular perturbation analysis

The paper is organized as follow: In Section II, a model is defined under some assumptions and the problem is stated. Section III is devoted to design an adaptive law to adapt the resistive load. Section IV proposes a hybrid dynamical control that achieves the objectives of our problem. Some simulations are performed in Section V. And Section VI draws the conclusion and future works.

Due to space limitations, the proofs of theorems are omitted.

Notation: Through out the paper \mathbb{R} denotes the set of real numbers, \mathbb{R}^n the n-dimensional euclidean space and $\mathbb{R}^{n \times m}$ the set of all real $m \times n$ matrices. The set \mathcal{S}^n denotes the set of symmetric positive definite matrices of matrices $\mathbb{R}^{n \times n}$. $\Re(z)$ is the real part of a complex number z . The symbol \neq means not identically equal.

II. BOOST CONVERTER

A boost converter generates an DC output voltage larger than its DC input. This converter is fed by a constant voltage source, V_{in} , and composed of a load filter, L, C_0 , a purely and resistive load, R_0 , and a parasite resistance, R_{LS} , that encompasses switching energy dissipation and the inductance (see Fig. 1). The system differential equations are

$$\frac{d}{dt} \begin{bmatrix} i_L(t) \\ v_C(t) \end{bmatrix} = \begin{bmatrix} -\frac{R_{LS}}{L} & -\frac{(1-s)}{L} \\ \frac{(1-s)}{C_0} & -\frac{1}{R_0 C_0} \end{bmatrix} \begin{bmatrix} i_L(t) \\ v_C(t) \end{bmatrix} + \begin{bmatrix} \frac{V_{in}}{L} \\ 0 \end{bmatrix}. \quad (1)$$

where, i_L is the inductance current, v_C is the capacitor voltage, which are the two continuous-time state variables, s is a discrete variable that takes the values $s = 0$ and $s = 1$, that correspond to the case when the switch is ON and OFF, respectively.

Now, consider the following variable change $u := 1 - s$, being $u = \{0, 1\}$, which corresponds to the control input. By introducing this change in system (1) we get

$$\frac{d}{dt} \begin{bmatrix} i_L(t) \\ v_C(t) \end{bmatrix} = \begin{bmatrix} -\frac{R_{LS}}{L} & -\frac{u}{L} \\ \frac{u}{C_0} & -\frac{1}{R_0 C_0} \end{bmatrix} \begin{bmatrix} i_L(t) \\ v_C(t) \end{bmatrix} + \begin{bmatrix} \frac{V_{in}}{L} \\ 0 \end{bmatrix}. \quad (2)$$

Assumption 1: Let consider

- the converter current is continuous and all the components are ideal,
- the current and voltage are accessible,
- the load R_0 is unknown constant or/and slowly variable in the interval $[R_0^m, R_0^M]$.
- $x_2 = 0$ corresponds to the starting operation mode, and any starting strategy is used, to bring our system to $x_2 \neq 0$.

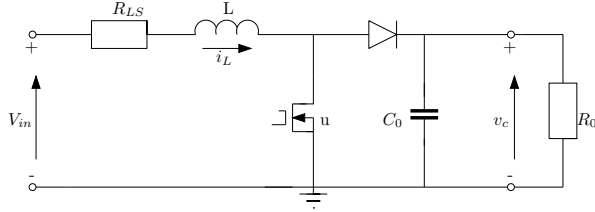


Fig. 1. Boost converter .

Defining $\beta := \frac{1}{R_0} \in [\beta^m, \beta^M]$, let rewrite (2) as follows

$$\begin{aligned} \dot{x} &= A_u(\beta)x + a \\ y &= Cx \end{aligned} \quad (3)$$

where $x = [x_1 \ x_2]^T = [i_L \ v_C]^T$ and C is the identity matrix with suited dimension. We can easily deduce the definition of $A_u(\beta)$ and a from (2).

This paper focuses on the design of a switching signal u , that ensures the suitable convergence properties of both: the voltage x_2 to a desired value, x_{2e} , for the switching system with arbitrary switching, and the estimation of the load $\hat{\beta}$ to its real value, β .

Assumption 2: There exists $\lambda_e = [\lambda_{e,1}, \lambda_{e,2}]$ satisfying $\lambda_{e,1} + \lambda_{e,2} = 1$, such that the following convex combination holds:

$$\sum_{i=1}^2 \lambda_{e,i} (A_i(\beta)x_e + a) = 0.$$

This assumption is necessary and sufficient to guarantee the existence of a switching signal that ensures forward invariance of the point x_e .

Assumption 3: Let consider next polytope for parameter β :

$$\Omega := \sum_{m=1}^2 \lambda_{\beta,m} \beta_m, \text{ for all } 0 \leq \lambda_{\beta,m} \leq 1, \sum_{m=1}^2 \lambda_{\beta,m} = 1,$$

where the vertices of the polytope are given by $\beta_m \in \{\beta^m, \beta^M\}$.

Now, from [4], we assume next property of the boost converter.

Property 1: Consider Assumption 3, then given matrices $A_i(\beta)$, $i \in \{1, 2\}$ in (3) with $\beta \in [\beta^m, \beta^M]$, there exist matrices $P, Q \in \mathcal{S}^2$ satisfying

$$A_i^T(\beta_m)P + PA_i(\beta_m) + 2Q < 0 \quad (4)$$

for all $i, m \in \{1, 2\}$.

Note that Property 1 assumes that all matrices $A_i(\beta_m)$ are Hurwitz.

Inspired by the work in [12], this paper extends the work presented in [4], for model (3) where parameter β , can suffer variations.

Problem 1: The goal is to include an adaptive controller in the hybrid dynamical scheme that considers the continuous-time dynamics, $x_1, x_2, \hat{\beta}$, and the discrete-time dynamic, u , estimating β in continuous-time, at the same time that x_2 is regulated in a reference value (see Fig. 2).

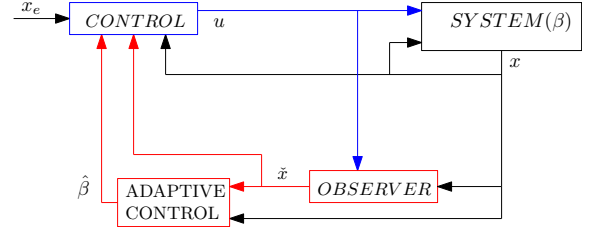


Fig. 2. Hybrid adaptive control scheme.

III. ADAPTATION LAW

The proposed adaptation law is composed of a state observer for the voltage x_2 , and an adaptation law for parameter β , with the following structure

$$\dot{\hat{x}}_2 = \frac{1}{C_0}(ux_1 - \hat{\beta}x_2) + \alpha(x_2 - \hat{x}_2) \quad (5)$$

$$\dot{\hat{\beta}} = g(x_2, \hat{x}_2), \quad (6)$$

where $g(x_2, \hat{x}_2)$ is the adaptation law to be designed, \hat{x}_2 is the estimated state of x_2 , $\hat{\beta}$ is the estimated value of β and α is a positive constant parameter.

In order to achieve a mathematical expression for $g(x_2, \hat{x}_2)$, let define the following error variables, considering $\hat{\beta} = 0$

$$\tilde{x}_2 := x_2 - \hat{x}_2, \quad \tilde{\beta} := \beta - \hat{\beta}, \quad \dot{\tilde{\beta}} = -\dot{\hat{\beta}} \quad (7)$$

Next, from (3) and (5), we derive the error equation of x_2

$$\dot{\tilde{x}}_2 = -\frac{\tilde{\beta}}{C_0}x_2 - \alpha\tilde{x}_2. \quad (8)$$

Now, let introduce the next candidate Lyapunov function

$$W = \frac{1}{2} \left(\tilde{x}_2^2 + \frac{\tilde{\beta}^2}{\gamma} \right), \quad (9)$$

where γ is constant and positive. The derivative of W along the trajectories of (6)-(8) gives:

$$\dot{W} = -\alpha\tilde{x}_2^2 - \frac{x_2\tilde{x}_2}{C_0}\tilde{\beta} + \frac{\tilde{\beta}\dot{\tilde{\beta}}}{\gamma} = -\alpha\tilde{x}_2^2 + \tilde{\beta} \left(-\frac{x_2\tilde{x}_2}{C_0} + \frac{\dot{\tilde{\beta}}}{\gamma} \right).$$

The adaptation law is now defined by canceling the terms in parenthesis, i.e.

$$\dot{\hat{\beta}} = \frac{\gamma x_2 \check{x}_2}{C_0}. \quad (10)$$

Remark 1: Note that, γ defines the adaptation speed, and consequently, if γ is larger, then the adaptation speed comes larger.

Stability properties of (8), (10) are stated in the following lemma:

Lemma 1: Consider the system (3), and assume that its solutions are bounded. The extended observer (8)–(10) has the following properties:

- i) The estimated states $\hat{x}_2, \hat{\beta}$ are bounded.
- ii) $\lim_{t \rightarrow \infty} \hat{x}_2(t) = x_2(t)$.
- iii) $\lim_{t \rightarrow \infty} \hat{\beta}(t) = \beta$, if and only if $x_2(t) \neq 0, \forall t \geq 0$.

Proof: The observer and the adaptive law error equations are fully defined from (8) and (10), and stability properties of these equations follow from the Lyapunov function W defined above. Note that with the choice (10)

$$\dot{W} = -\alpha \check{x}_2^2$$

and from standard Lyapunov arguments, it follows that the error variable \check{x}_2 and $\check{\beta}$ are bounded. In addition by LaSalle invariant principle and from Assumption (1), that specifies that $x_2 \neq 0$, we easily conclude that $\check{x}_2 \rightarrow 0$, which implies from (10) that $\check{\beta} \rightarrow 0$. Likewise from (8), and concluding from $\check{x}_2 \rightarrow 0$ that $\dot{\check{x}}_2 \rightarrow 0$, we get $\check{\beta} \rightarrow 0$. ■

IV. HYBRID MODEL AND PROPOSED CONTROL LAW

In this section we design an hybrid dynamical system, following the paradigm given in [13], wherein continuous-time behavior encompasses the evolution of x, \hat{x}_2 and $\hat{\beta}$ and, the discrete-time behavior captures the jump of the switch boost converter signal, u , and the jump of a discrete signal, $q \in \{1, 2\}$, which detects if the parameter β needs to be adapted. $q = 1$ allows the β adaptation and $q = 2$ interdicts this possibility.

We characterize the overall dynamics

$$\mathcal{H} : \begin{cases} \begin{bmatrix} \dot{x} \\ \dot{u} \\ \dot{\hat{x}}_2 \\ \dot{\hat{\beta}} \\ \dot{q} \end{bmatrix} = f(x, u, \hat{x}_2, \hat{\beta}), & (\xi) \in \mathcal{C} \\ \begin{bmatrix} x^+ \\ u^+ \\ \hat{x}_2^+ \\ \hat{\beta}^+ \\ q^+ \end{bmatrix} \in G(x, \hat{x}_2, \hat{\beta}, q), & (\xi) \in \mathcal{D}, \end{cases} \quad (11)$$

where $\xi = [x \ u \ \hat{x}_2 \ \hat{\beta} \ q]$ and G is a (set-valued) map

representing the switching logic:

$$f(x, u, \hat{x}_2, \hat{\beta}) := \begin{bmatrix} A_u(\beta)x + a \\ 0 \\ \frac{1}{C_0}(ux_1 - \hat{\beta}x_2) + \alpha\check{x}_2 \\ -\frac{\gamma x_2 \check{x}_2}{C_0} \\ 0 \end{bmatrix} \quad (12)$$

$$G(x, \hat{x}_2, \hat{\beta}, q) := \begin{bmatrix} x \\ \underset{i \in \mathbb{K}}{\operatorname{argmin}} \tilde{x}^T P(A_i(\hat{\beta})x + a) \\ \hat{x}_2 \\ \hat{\beta} \\ 3 - q \end{bmatrix}$$

and where $\tilde{x} = [\tilde{x}_1 \ \tilde{x}_2]$ is defined from the desired values $x_e = [i_e \ v_e]^T = [x_{e1} \ x_{e2}]^T$ as follows

$$\begin{cases} \tilde{x}_1 = x_1 - x_{e1} \\ \tilde{x}_2 = (x_2 - x_{e2}) + (x_2 - \hat{x}_2). \end{cases} \quad (13)$$

Inspired in [4], we select the so-called flow and jump sets

$$\mathcal{C}_1 := \{(x, \hat{x}_2, q) : \{q = 1\} \text{ and } |x_2 - \hat{x}_2| \geq \varepsilon\} \quad (14)$$

$$\mathcal{D}_1 := \{(x, \hat{x}_2, q) : \{q = 1\} \text{ and } |x_2 - \hat{x}_2| \leq \varepsilon\}, \quad (15)$$

$$\mathcal{C}_2 := \{\xi : \{q = 2\} \text{ and } |x_2 - \hat{x}_2| \leq \varepsilon \text{ and}$$

$$\tilde{x}^T P(A_u(\hat{\beta})x + a) \leq -\eta \tilde{x}^T Q_u \tilde{x}\}, \quad (16)$$

$$\mathcal{D}_2 := \{\xi : \{q = 2\} \text{ and } |x_2 - \hat{x}_2| \geq \varepsilon \text{ or}$$

$$\tilde{x}^T P(A_u(\hat{\beta})x + a) \geq -\eta \tilde{x}^T Q_u \tilde{x}\}, \quad (17)$$

where $\mathcal{D} := \mathcal{D}_1 \cup \mathcal{D}_2$ and $\mathcal{C} := \mathcal{C}_1 \cap \mathcal{C}_2$, $\eta \in (0, 1)$ and $\varepsilon > 0$ is small enough.

Proposition 1: The hybrid dynamical system (11)–(17) satisfies the basic hybrid conditions [13, Assumption 6.5], then it is well-posed.

Proof: The hybrid dynamical system (11)–(17) satisfies the basic hybrid conditions because

- sets \mathcal{C} and \mathcal{D} are closed.
- f is a continuous function, thus it trivially is outer semicontinuous and convex. Moreover, is locally bounded.
- G is closed, then it also is outer semicontinuous [13, Lemma 5.1] and, it is locally bounded.

Finally, following [13, Theorem 6.30], we conclude that the hybrid dynamical system is well-posed. ■

Now, we invokes the lemma presented in [4].

Lemma 2: Consider matrices $P, Q \in \mathcal{S}^2$ satisfying Property 1, a point $x_e \in \mathbb{R}^2$ satisfying Assumption 2. Then for each $x \in \mathbb{R}^2$,

$$\min_{i \in \mathbb{K}} \tilde{x}^T P(A_i(\beta)x + a) \leq \min_{i \in \mathbb{K}} -\tilde{x}^T Q_i \tilde{x}$$

The proof is given in [4].

Remark 2: We note here that, if $\tilde{x} \neq 0$

$$-\tilde{x}^T Q \tilde{x} < -\eta \tilde{x}^T Q \tilde{x}.$$

Note, that if $\eta \rightarrow 0$, we get to reduce the switching frequency and on the contrary if $\eta \rightarrow 1$, we increase the switching frequency. On the other hand, if $\tilde{x} = 0$, we get

arbitrary fast switches, that can be reduced using the space regularization propose by the authors in [14].

We comment here the behavior of any solution to hybrid system (11)–(17). Note that if any solution is in \mathcal{C}_1 or \mathcal{D}_1 , that means $q = 1$, the adaptation of the parameter β is possible and, the contrary case is, if any solution is in \mathcal{C}_2 or \mathcal{D}_2 , that means $q = 2$. First, consider that any solution is in \mathcal{C}_1 , then the observer error \tilde{x}_2 is larger than any small and positive ε and the parameter β is adapting. When the adaptation error of β is arbitrary small, that means $\tilde{x}_2 \leq \varepsilon$, then, the solution will be in \mathcal{D}_1 and the solution jumps. After the jump, we have $q = 2$ and the solution is in \mathcal{C}_2 until that one of these cases happens:

- $|x_2 - \hat{x}_2| \geq \varepsilon$: then solution is in \mathcal{D}_2 and jumps to \mathcal{C}_1 , flowing here until $\tilde{x}_2 \leq \varepsilon$.
- $\tilde{x}^T P(A_u(\hat{\beta})x + a) \geq -\eta \tilde{x}^T Q_u \tilde{x}$ and $|x_2 - \hat{x}_2| \leq \varepsilon$: then solution is in \mathcal{D}_2 , it jumps to \mathcal{D}_1 and following the result of Lemma 2 the solution jumps again to \mathcal{C}_2 , flowing here for a time (as proven bellow).

The Fig.3, shows a representative scheme of the hybrid dynamical system (11)–(17)

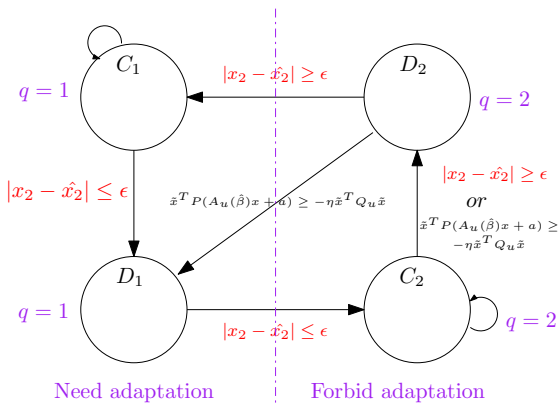


Fig. 3. Representative diagram of our hybrid system.

Remark 3: Note that when $|x_2 - \hat{x}_2| \geq \varepsilon$, any solution to \mathcal{H} flows in \mathcal{C}_1 with u constant. Then the state x will flow according (1) to

$$i_{L,c} = \frac{V_{in}}{R_{LS} + u^2 R_0} \quad (18)$$

$$v_{C,c} = u R_0 i_{L,c}. \quad (19)$$

Note that if $v = 0$, x_2 converges to $v_{C,c} = 0$, however from (1), we have $x_2(t) = x_2(0)e^{-\frac{1}{R_0 C_0} t}$, then $x_2 \neq 0$, $\forall t \geq 0$.

Now, following the system hybrid theory, we will establish stability properties of the given compact attractor

$$\mathcal{A} := \{\xi : x = x_e, u \in \{0, 1\}, \hat{x}_2 = x_2, \hat{\beta} = \beta, q \in \{1, 2\}\}. \quad (20)$$

The following theorem is the main result of our paper, and the proof is removed in this version, because of the lack of space.

Theorem 1: Consider Assumption 1,2,3 and matrices $P, Q \in \mathcal{S}^2$ satisfying Property 1 and $\gamma > 0$. Then attractor (20) is uniformly locally asymptotically stable (ULAS) for hybrid system (11)–(17).

Let comment here the choice of matrices P and Q . These matrices are selected following some optimization criteria for our hybrid system. Specifically, we use [4, Theorem 2], where some performance level is guaranteed, then the following bound holds along any solution of the hybrid system (11)–(17)

$$J \leq \eta^{-1} \tilde{x}^T P \tilde{x}$$

defined in a compact hybrid time domain [13, Definition 2.3]. However, the resulting solutions will be sub-optimal, because they are characterized by a Fillipov solution.

On the other hand, we find that the suboptimal-level corresponds to an arbitrary high frequency switches, what can increase the dissipated energy. Therefore, we need to find a trade-off between any performance level and switching frequency.

V. SIMULATIONS ON BOOST CONVERTER

In this section, we validate our hybrid approach for the boost converter (1) in simulation. These simulations are performed in MATLAB/Simulink by exploiting the HyEQ Toolbox [15].

Consider $V_{in} = 100V$, $R = 2\Omega$, $L = 500\mu H$, $C_0 = 470\mu F$,

$$R_0 = 50\Omega \in [25, 75]\Omega \Rightarrow \beta = 0.02 \in [0.0133, 0.04], \quad (21)$$

which corresponds to 50% of variation with respect to the nominal value of R_0 and a sampling time $T_s = 10^{-6}s$.

The switched system state space model (1) is defined by the following matrices:

$$A_1 = \begin{bmatrix} -R/L & 0 \\ 0 & -1/R_0 C_0 \end{bmatrix}, \quad A_2 = \begin{bmatrix} -R/L & -1/L \\ 1/C_0 & -1/R_0 C_0 \end{bmatrix}$$

$$B_1 = B_2 = \begin{bmatrix} 1/L \\ 0 \end{bmatrix}.$$

The set of all attainable equilibrium points are given following [5]

$$X_e = \{(i_e, v_e) : V_{in}/(R + R_0) \leq i_e \leq V_{in}/R, v_e^2 + (R R_0) i_e^2 - (R_0 V_{in}) i_e = 0\}.$$

For our simulations, the chosen equilibrium is

$$x_e = [i_e(\beta) \quad 120]^T. \quad (22)$$

Following the specification given at the end of Section IV and considering the variation of β (21), the cost function is

$$J = \min_u \sum_{k \in \text{dom}_j(\xi)} \int_{t_k}^{t_{k+1}} \frac{\rho}{R_0} (v_c(\tau, k) - v_e)^2 + R (i_L(\tau, k) - i_e)^2 d\tau$$

with $\rho = 1000$, and

$$P = \begin{bmatrix} 23.14 & 1.08 \\ 1.08 & 37.04 \end{bmatrix} \cdot 10^{-2}, \quad Q = \begin{bmatrix} R & 0 \\ 0 & \frac{\rho}{R_0} \end{bmatrix}$$

satisfies Property 1.

Moreover, we take $\eta = 0.1$ which corresponds to a sub-optimal value that guarantees a trade-off between performance level and switching frequency, as shown in in [4].

Practically, the states of the boost converter are bounded by a minimum and maximum values. Here, let consider that the maximum voltage value is 500V. Likewise, having $|\lambda_s| = 4000$ for the minimum eigenvalue of the slow system and as we need to satisfy $4000 \ll \alpha$; for this issue, we select the convergence speed of the observer state $\alpha = 40000$,

Next step is to select the adaptation speed, γ . In a first time, we choose γ such that there is not oscillation, i.e., $0 < \gamma \leq \frac{\alpha^2 C_0^2}{4x_2^2 p} = 62 \cdot 10^{-4}$, $\gamma = 5 \cdot 10^{-4}$ in Fig. 4, and $\gamma = 50 \cdot 10^{-4}$ in Fig. 5. Finally, we take $\varepsilon = 10^{-3}$. Note that in these simulations, the load changes twice, in the transient time at $t = 0.001s$ and in the steady state at $t = 0.03s$.

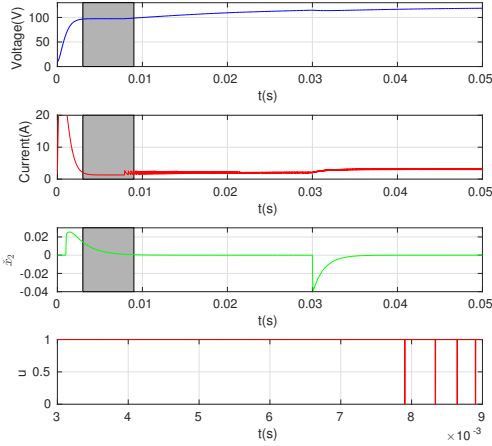


Fig. 4. Voltage, current and \check{x}_2 evolution for $\gamma = 5 \cdot 10^{-4}$ and zoom of u .

Figure 4 and 5 show the convergence of x to the equilibrium x_e (22) for any change of β , which is achieved with $\lambda_e = [0.17 \ 0.83]^T$ satisfying Assumption 2. Note that during the adaptation of β , that means, when $|\check{x}_2| \geq \varepsilon$, at $t = 0.001s$ and $t = 0.03s$ the states flow with u constant converging to $i_{L,c}$, $v_{C,c}$, given in (18)–(19). When $|\check{x}_2| \leq \varepsilon$ the states evolve switching the discrete variable u . This evolution can be seen in the zoom of u in Fig. 4 and 5 for different adaptation speed, γ . Note that if γ is larger the adaptation faster is, according Remark 1.

We can also see during the load changes that, the error \check{x}_2 increases, but it converges to zero, due to the fact

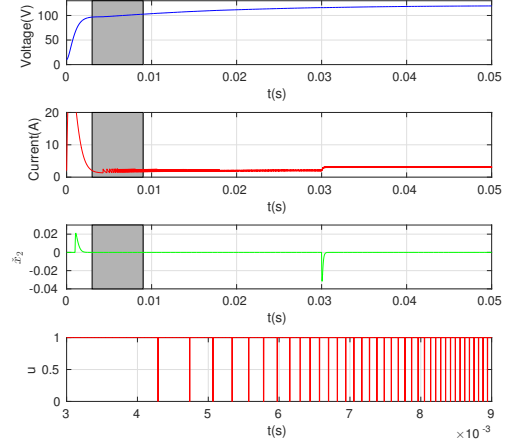


Fig. 5. Voltage, current and \check{x}_2 evolution for $\gamma = 50 \cdot 10^{-4}$ and zoom of u .

that $\hat{\beta}$ is adapted to its real value β , as is established in Lemma 1. Then, we can conclude from Theorem 1 that our attractor (20) is ULAS.

Now, we shows in Fig. 6 and 7 the case when the adaptation presents some oscillations, i.e. $\gamma > \frac{\alpha^2 C_0^2}{4x_2^2 p} = 62 \cdot 10^{-4}$. We select $\gamma = 0.1$ in Fig. 6 and $\gamma = 1$ in Fig. 6. Note that x converges to the equilibrium x_e (22), after some oscillations of \check{x}_2 , the observer convergence is faster, as γ larger is.

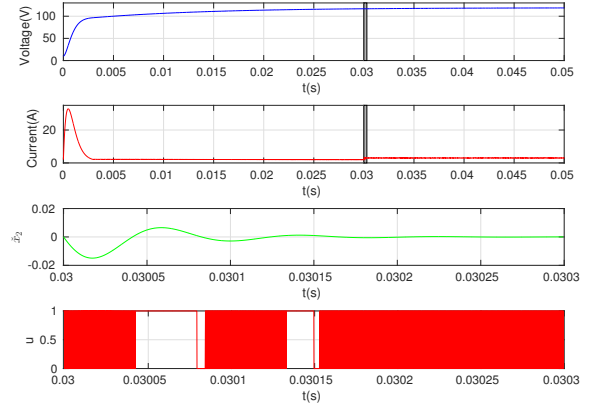


Fig. 6. Voltage, current and \check{x}_2 evolution for $\gamma = 0.1$ and zoom of u .

VI. CONCLUSIONS AND FUTURE WORKS

A hybrid adaptive control for unknown constant or/and slowly variable load is presented for a boost converter. The method focuses on a hybrid dynamical theory, that considers the real nature of the signals, that means, the continuous-time and the discrete-time signals. On this paradigm an adaptive control is proposed which guarantees the robustness of the voltage in a reference value. This adaptive control is fed by a state

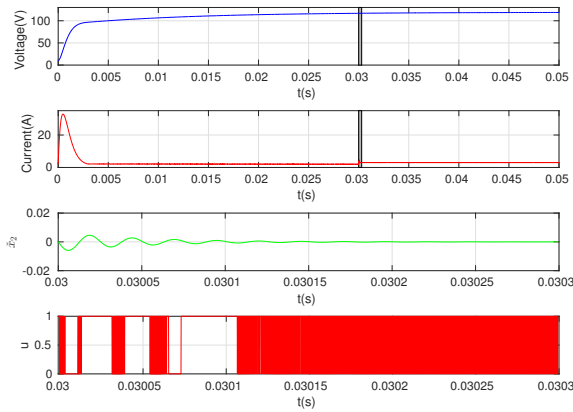


Fig. 7. Voltage, current and \tilde{x}_2 evolution for $\gamma = 1$ and zoom of u .

observer designed by assuming that the state variables are measured. ULAS of the full system is proven by using a standard singular perturbation analysis and, using Tikhonov's theorem.

A future work is to consider a time or space regulation to generate a dwell-time in the controller to reduce the switching in the steady-state.

REFERENCES

- [1] S. S. Muley, R. M. Nagarale . Pwm-based sliding mode control of dc-dc boost converter. *International Journal of Advances in Engineering Technology*, 6(5):2171–2178, 2013.
- [2] P.T. Krein, J. Bentsman, R. M. Bass and B. Lesieutre . On the use of averaging for the analysis of power electronic systems. *IEEE Transactions on Industrial Electronics*, 60 (8):3291–3294, 2013.
- [3] SC Tan and YM Lai and KT Chi and L. Martínez-Salamero and CK. Wu. A fast-response sliding-mode controller for boost-type converters with a wide range of operating conditions. *IEEE Transactions on Industrial Electronics*, 54(6):3276–3286, 2007.
- [4] C. Albea, G. Garcia and L. Zaccarian. Hybrid dynamic modeling and control of switched affine systems: application to DC-DC converters. In *54th IEEE Conference on Decision and Control*, Osaka, Japan, December 2015. An extended version is available in: <https://hal.archives-ouvertes.fr/hal-01220447v3/document>.
- [5] J.C. Geromel, P. Colaneri and P. Bolzern. Dynamic output feedback control of switched linear systems. *IEEE Transactions on Automatic Control*, 2008.
- [6] T. AF. Theunisse and J. Chai and R. G. Sanfelice and M. HW. P. Heemels. Robust global stabilization of the dc-dc boost converter via hybrid control. *IEEE Transactions on Circuits and Systems I: Regular Papers*, 62(4):1052–1061, 2015.
- [7] G. J. Jeong, I. H. Kim, Y. I. Son. Application of simple adaptive control to a dc/dc boost converter with load variation. *ICCAS-SICE(2009)*, pages 1747–1751, 209.
- [8] H. El Fadil, F. Giri, J.M. Guerrero, B. Salhi. Adaptive control of interleaved boost converter for fuel cell energy. *American Control Conference (ACC), 2011*, pages 3905–3910, 2011.
- [9] H. Sira-Ramirez, R. Tarantino-Alvarado and O. Llanes-Santiago. Adaptive feedback stabilization in pwm-controlled dc-to-dc power supplies. *International Journal of Control*, pages 599–625, 1993.
- [10] H. El Fadil, F. Giri. Backstepping based control of pwm dc-dc boost power converters. *Industrial Electronics, 2007. ISIE 2007. IEEE International Symposium on*, pages 395–400, 2007.

- [11] S. Oucheriah and L. Guo . Pwm-based adaptive sliding-mode control for boost dc/dc converters. *IEEE Transactions on Power Electronics*, 5(2):182–190, 1990.
- [12] C. Albea and F. Gordillo and C. Canudas-de-Wit. Adaptive control design for a boost inverter. *Control Engineering Practice*, 19(1):32–44, 2011.
- [13] R. Goebel and R.G. Sanfelice and A.R. Teel. *Hybrid Dynamical Systems: modeling, stability, and robustness*. Princeton University Press, 2012.
- [14] C. Albea, O. Santos, D. Zambrano Prada, F. Gordillo, G. Garcia. Hybrid control scheme for a half-bridge inverter. working paper or preprint, November 2016.
- [15] R. G. Sanfelice, D. Copp and P. A. Nanez. A toolbox for simulation of hybrid systems in Matlab/Simulink: Hybrid equations (HyEQ) toolbox. In *Hybrid Systems: Computation and Control Conference*, 2013.