



HAL
open science

Recessed and P-GaN regrowth gate development for normally-off AlGa_N/Ga_N HEMTs

Chaymaa Haloui, Toulon Gaëtan, Josiane Tasselli, Yvon Cordier, Éric Frayssinet, Karine Isoird, Frédéric Morancho, Mathieu Gavelle

► **To cite this version:**

Chaymaa Haloui, Toulon Gaëtan, Josiane Tasselli, Yvon Cordier, Éric Frayssinet, et al.. Recessed and P-GaN regrowth gate development for normally-off AlGa_N/Ga_N HEMTs. 28 International Conference MIXED DESIGN OF INTEGRATED CIRCUITS AND SYSTEMS, Jun 2020, Wroclow, Poland. hal-02922723

HAL Id: hal-02922723

<https://laas.hal.science/hal-02922723>

Submitted on 1 Sep 2020

HAL is a multi-disciplinary open access archive for the deposit and dissemination of scientific research documents, whether they are published or not. The documents may come from teaching and research institutions in France or abroad, or from public or private research centers.

L'archive ouverte pluridisciplinaire **HAL**, est destinée au dépôt et à la diffusion de documents scientifiques de niveau recherche, publiés ou non, émanant des établissements d'enseignement et de recherche français ou étrangers, des laboratoires publics ou privés.

Recessed and P-GaN Regrowth Gate Development for Normally-off AlGaIn/GaN HEMTs

Chaymaa Haloui^{1,2}, Gaëtan Toulon³, Josiane Tasselli¹, Yvon Cordier⁴, Éric Frayssinet⁴,
Karine Isoird¹, Frédéric Morancho¹, Mathieu Gavelle²

¹LAAS-CNRS, Toulouse University, CNRS, UPS, Toulouse, France

²CEA Tech Occitanie, Toulouse, France

³EXAGAN, Toulouse, France

⁴CRHEA-CNRS, Valbonne, France

chaloui@laas.fr

Abstract—A new normally-off AlGaIn/GaN HEMT structure is proposed. The regrowth of a P-GaN layer on the AlGaIn/GaN heterostructure after the gate recess allows the achievement of the enhancement mode. A shift in the threshold voltage to positive values has been proved through simulation results. A precise control of the etch depth for the gate recess is detailed.

Keywords—HEMT; normally-off; AlGaIn/GaN; gate recess; RIE; P-GaN regrowth.

I. INTRODUCTION

AlGaIn/GaN high-electron mobility transistors (HEMTs) have attracted worldwide attention in power electronics as candidates for next-generation of high-speed switching devices. Thanks to the large electric field of GaN and the high carrier mobility and density in the two-dimensional electron gas (2DEG), AlGaIn/GaN HEMTs can achieve high breakdown voltage and realize ultrahigh power density operation with low power losses.

While most of the demonstrated AlGaIn/GaN HEMTs are inherently normally-on with a negative gate threshold voltage, normally-off mode is strongly demanded to fulfill the requirements of power electronics applications; normally-off devices are inherently secure and suitable for energy converters requiring specifically high system reliability. Several approaches, each with its own limitations, have been proposed to convert the inherent depletion mode (normally-on) into an enhancement mode (normally-off). Fluorine plasma ion implantation [1], oxygen treatment [2], gate injection transistor (GIT) [3] and P-GaN gate [4] are the most developed ones. In this paper a structure that combines two approaches (recessed and P-GaN regrowth gate) is presented. The use of a P-GaN layer on the AlGaIn/GaN heterostructure under the gate contact region lifts up the band diagram, which causes the depletion of the 2DEG channel, even in the absence of external bias. First, the simulated performance of the new device will be presented, then an overview of the technological process mandatory to realize such a device will be proposed, with a particular focus on the gate recess step.

II. THE SIMULATED STRUCTURE

Numerical simulations were performed with Sentaurus TCAD tools in order to have an insight of the HEMT parameter sensitivity. The designed structure has source, drain and gate contact lengths of 1 μm , a gate-source distance of 2 μm and a gate-drain distance of 15 μm . A gate field plate of 3 μm is added at drain side. Contrary to other studies [5] [6], the deep ionization energy of the Mg dopant is not considered, which means that this region presents an "equivalent" uniform doping profile. Comparative simulations (not presented) with the use of the "incomplete ionization" model present similar results in terms of threshold voltage. Two cases were analyzed: the one with the gate metal directly on top of the P-GaN region, and the other with an insulator between them (Fig. 1).

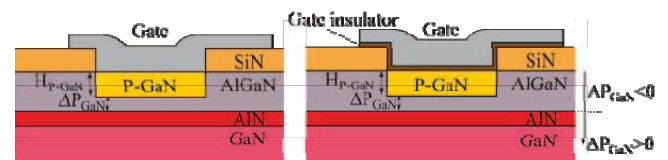


Fig. 1. Gate detail of the proposed structure with metal on P-GaN (left) and with gate insulator on top of P-GaN (right)

First simulations were performed on structures with metal on P-GaN. Band diagram through the gate at 0 V for different AlGaIn thicknesses below the gate is presented in

Fig. 2. The etched AlGaIn effect can be seen on the conduction band profile, especially at GaN side. Negative ΔP_{GaN} values means that the remaining AlGaIn layer under the gate provides higher polarization charge to deplete, that finally results to lower threshold voltage.

Simulation results of the threshold voltage variations as a function of the P-GaN doping are represented in Fig. 3. When considering ohmic contact, no depletion appears on P-GaN, that can be confirmed by the absence of band bending on

Fig. 2, so the threshold voltage is independent on P-GaN doping concentration. On the contrary, the Schottky contact puts the energy bands downward for lower values of doping concentration, while only high doping values will pin the Fermi

level close to the valence band. Therefore, the threshold voltage variation is related to the depletion thickness on P-GaN.

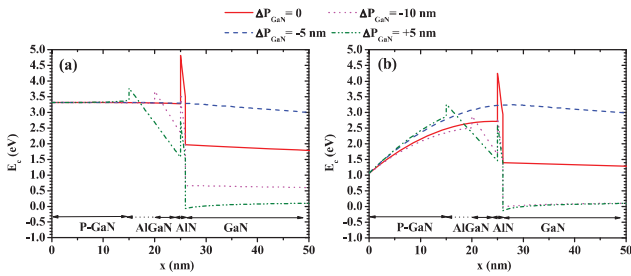


Fig. 2. Conduction band energy profile through the gate for different ΔP_{GaN} values for ohmic (a) and Schottky (b) gate contact.

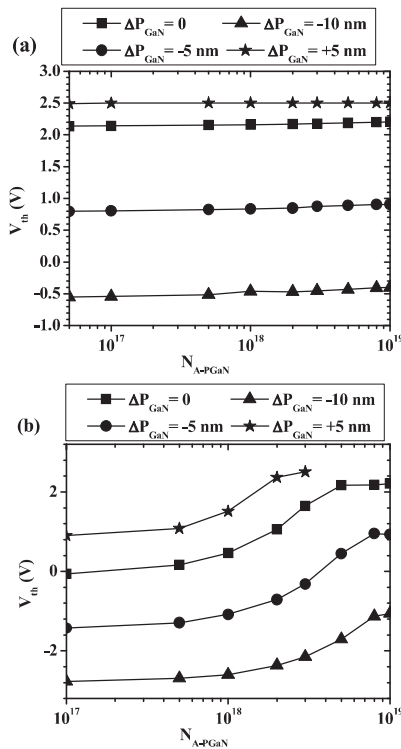


Fig. 3. Threshold voltage as a function of P-GaN doping concentration for different ΔP_{GaN} values when the gate contact is defined ohmic (a) and Schottky (b).

For the analysis of the structure with a gate insulator, the material used as insulator as well as its thickness have to be considered. Materials such as SiO_2 or Al_2O_3 are promising due to their higher bandgap and electron affinity [7], which means an increase in the conduction band continuity with the P-GaN. However, the lower relative permittivity of SiO_2 is not favourable in terms of electrical characteristics since it gives lower transconductance as represented in Fig. 4. Moreover, it has been demonstrated that SiO_2 induces high density of surface states with GaN [8].

Threshold voltage variations with P-GaN doping concentration for different insulator materials and thicknesses are presented in Fig. 5. Interface states density has been inserted, based on extracted values for structures with the Si_3N_4

layer deposited on P-GaN by LPCVD. These values are expected to change with the insulator material and its deposition method.

Results from structures with insulator show similar trends that previously observed. The additional layer of dielectric absorbs more or less electric field when a gate voltage is applied, depending on its thickness and permittivity, enhancing by the way the threshold voltage variation with doping concentration, which means that the threshold voltage presents stronger voltage variations with P-GaN doping. If high P-GaN doping concentration can be demonstrated, high positive threshold voltage is achievable.

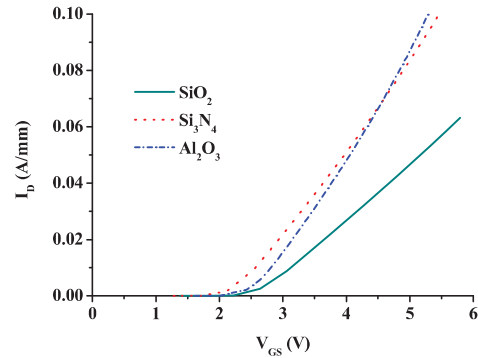


Fig. 4. Transfer characteristics $I_D(V_{\text{GS}})$ of HEMT with different gate insulators of 30 nm thick.

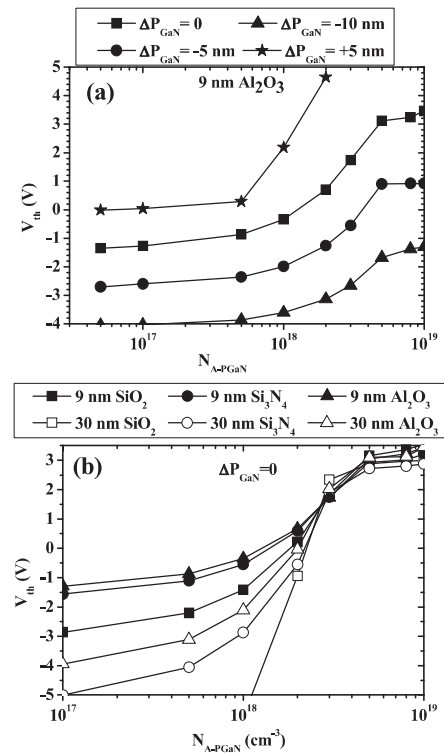


Fig. 5. Threshold voltage as a function of doping concentration for different parameters: (a) P-GaN distance (ΔP_{GaN}) from AlN surface for 9 nm of Al_2O_3 and (b) different insulator materials and thicknesses.

III. GATE RECESS PROCESS

A fabrication process of the presented device was conducted in order to validate the simulation results previously detailed. The AlGaIn/GaN HEMT layers were grown by metal organic chemical vapor deposition (MOCVD) on Si: the epilayer stacking is composed of an alternation of AlN/GaN layers, followed by a 1.5 μm GaN, 1.5 nm AlN interface enhancement layer, a 25 nm $\text{Al}_{0.3}\text{Ga}_{0.7}$ layer and a 10 nm SiN cap layer.

Before the gate recess, 50 nm of Si_3N_4 and 100 nm of SiO_2 were deposited on the epitaxial layers, by LPCVD and ICPECVD respectively (Fig. 6.a) The role of Si_3N_4 is to conserve the 2DEG density and the SiO_2 one is to prevent the growth of the P-GaN outside the gate region. The gate is then opened through the etching of three materials: SiO_2 and Si_3N_4 were both removed by CHF_3/O_2 ICP plasma and AlGaIn by Cl_2 RIE dry etching (Fig. 6.b). This step is pursued by localized MBE epitaxy of a P-GaN layer into the gate region (Fig. 6.c). The SiO_2 masking layer is removed thereafter by wet etching (Fig. 6.d).

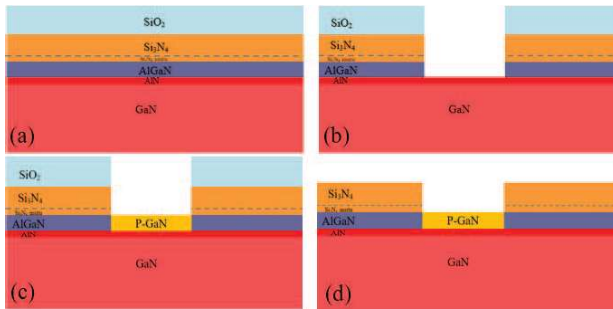


Fig. 6. Schematic process flow of the localized regrowth of p-GaN on the gate region. (a) Succession of the epitaxial layers on the Si substrate; (b) gate recess by dry plasma etching (CHF_3/O_2 for Si_3N_4 and SiO_2 , Cl_2 for AlGaIn); (c) P-GaN regrowth by MBE with a Mg doping; (d) SiO_2 removal by wet etching.

A. AlGaIn etching

For the gate recess, inductively coupled plasma or reactive ion etching (ICP-RIE) are the most used techniques owing to their anisotropy etching and efficiency. However, several requirements must be fulfilled when using these techniques such as a smooth surface morphology and a low damage. As mentioned before, a normally-off P-GaN technology requires the use of a thin AlGaIn barrier layer (25 nm), therefore the etching rate has to be well-controlled in order to preserve the 2DEG properties. Selectivity is a very important factor in mastering etching rate: it depends on several parameters such as gas chemistry, chamber pressure and temperature. To the best of our knowledge, there is no selective recipe for AlGaIn etching and the etch rate strongly depends on plasma conditions. The majority of AlGaIn etching processes are based on chlorine as a principal etching agent: the chlorine-containing reactant may be boron trichloride (BCl_3), chlorine (Cl_2), or a mixture of the two gases [9].

In the present work, a Cl_2 -based etching was carried out in a RIE plasma etch system for the AlGaIn gate recess. The etching conditions were the same as reported by D. Buttari *et al.* [10]: RF power = 60 W, pressure = 5 mTorr and

Cl_2 flow = 10 sccm. The wafer was patterned using ECI 3012 photoresist of 1.1 μm thick. The removal of the photoresist mask, after etching, was performed by acetone and isopropanol (IPA), followed by DI water and O_2 plasma (800 W). However, further cleaning was necessary for removing the photoresist post-etch residues remaining on the AlGaIn layer: it will be discussed later. Etch depths were measured by transmission electron microscopy (TEM) and determined to be about 6 nm, 19 nm and 21 nm for 25 s, 35 s and 45 s etching times respectively. A FIB sectional view of the gate after etching is presented in Fig. 7 for 35 s AlGaIn etching.

The use of a medium RIE power (< 100 W) and the consequent slow etch rate allowed an accurate control of AlGaIn thinning. Times lower than 25 s have not been tested because of the eventual presence of a thin surface oxide layer formed before the etch, that can give rise to a dead time by inhibiting etch at the beginning [11]. Above 45 s, the AlGaIn is completely etched as well as the underlying layers, AlN and part of GaN.

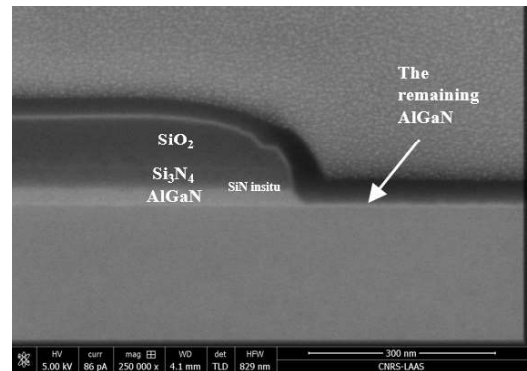


Fig. 7. Picture of FIB cut after the gate recess for RIE AlGaIn etching of 35 s.

B. Surface roughness

The root means square roughness RMS measured by AFM on a $2 \times 2 \mu\text{m}^2$ windows before and after etching are respectively 0.43 nm and 1.22 nm as shown in Fig. 8. The AlGaIn surface observed after a partial etching of 25 s exhibited a RMS three times higher than the non-etched AlGaIn one. It is very difficult to compare these values to those of literature because the roughness after etching depends on the as-grown surface roughness and the etching parameters. However, the obtained values remain in the range of values reported in literature [12].

It has been proved that the RMS roughness of the etched AlGaIn can be strongly affected by oxidation during plasma etching; the in-situ produced aluminum oxides may provide a self-mask effect [13]. Given that the bond energy of Al-O (21.2 eV/atom) is higher than that of Al-N (11.52 eV) and Ga-N (8.92 eV), AlGaIn etch would be limited by the formation of the aluminum oxide. Therefore, the non-uniformity of the aluminum oxide distribution will cause roughness on the etched surface. The addition of an appropriate quantity of BCl_3 to the plasma mixture could help to improve the smoothness of the etched surface. Indeed, BCl_3 reacts with oxygen to form some BCl_xO_y gases which could facilitate the removal of the oxygen remaining into the chamber [14].

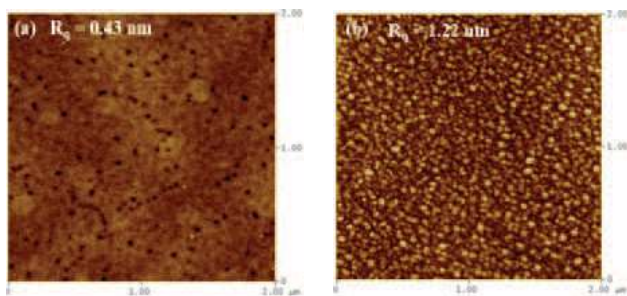


Fig. 8. AFM surface images of the AlGaIn (a) before etching, (b) after Cl_2 -RIE etching for 25 s: RF power = 60 W, pressure = 5 mTorr and Cl_2 flow = 10 sccm.

C. Post-etch residues

After the resist removal, we observed some residues on the etched surface that were very difficult to eliminate by conventional wet stripping methods. The SEM image in Fig. 9.a shows a veil residue on the etched region. These residual impurities are inherent by-products of the Cl_2 -based etch process. They are probably formed by a mixture of species stemming from the plasma ions, the photo-resist mask and the etched materials (SiO_2 , Si_3N_4 and AlGaIn), which prevents dissolution by solvents. Several experiments conducted to remove these tenacious post-etch residues by common chemical strippers were ineffective [15]. The selected solution consists of UV insolation of the wafer followed by a developing step. The efficiency of the after-etching cleaning can be observed in Fig. 9.b.

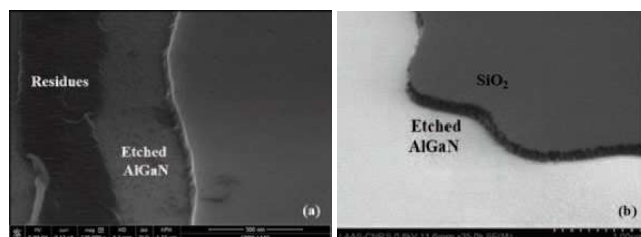


Fig. 9. SEM image showing (a) post-etch residues after the resist removal by acetone, isopropanol and DI water followed by O_2 plasma (5 min, 800 W); (b) the removal of the post-etch residues by UV insolation and development after etching.

IV. CONCLUSION

In this work, a new design of a normally-off HEMT was proposed. The introduction of a P-GaN layer on the AlGaIn/GaN heterostructure under the gate contact allows the normally-off functionality. The simulations were carried out in two cases: metal on P-GaN (ohmic and Schottky) and gate with insulator for different recess depths and P-GaN doping concentrations. High threshold voltages can be achieved by reducing the thickness of the remaining AlGaIn. With the ohmic contact, the threshold voltage is independent on P-GaN doping concentration, contrary to the Schottky one. With the gate insulator structure, the electrical performance depends on the type of insulator and its thickness. Then, a focus on the gate recess process, mandatory for the realization of such devices, was also detailed in this work. A precise AlGaIn etching was achieved by adjusting Cl_2 -RIE etching parameters. The roughness surface after etching was three times higher than the non-etched one but remains acceptable for a RIE mode. Some

post-etch residues were found on the etched AlGaIn surface and were removed by UV insolation and developing steps. The work of realization on the whole fabrication process of the AlGaIn /GaN HEMT is underway in order to demonstrate the normally-off behavior of such a device.

ACKNOWLEDGMENT

This work was partly supported by LAAS-CNRS micro and nanotechnologies platform member of the French RENATECH network.

REFERENCES

- [1] K. J. Chen *et al.*, "Physics of fluorine plasma ion implantation for GaN normally-off HEMT technology," 2011, pp. 19.4.1-19.4.4, doi: 10.1109/IEDM.2011.6131585.
- [2] Y.-L. He *et al.*, "Recessed-gate quasi-enhancement-mode AlGaIn/GaN high electron mobility transistors with oxygen plasma treatment," *Chin. Phys. B*, vol. 25, no. 11, p. 117305, Nov. 2016, doi: 10.1088/1674-1056/25/11/117305.
- [3] H. Okita *et al.*, "Through recessed and regrowth gate technology for realizing process stability of GaN-GITs," in *2016 28th International Symposium on Power Semiconductor Devices and ICs (ISPSD)*, Prague, Czech Republic, 2016, pp. 23–26, doi: 10.1109/ISPSD.2016.7520768.
- [4] Y. Zhong *et al.*, "Effect of Thermal Cleaning Prior to p-GaN Gate Regrowth for Normally Off High-Electron-Mobility Transistors," *ACS Appl. Mater. Interfaces*, vol. 11, no. 24, pp. 21982–21987, Jun. 2019, doi: 10.1021/acsami.9b03130.
- [5] L. Efthymiou, G. Longobardi, G. Camuso, T. Chien, M. Chen, and F. Udrea, "On the physical operation and optimization of the p-GaN gate in normally-off GaN HEMT devices," *Appl. Phys. Lett.*, vol. 110, no. 12, p. 123502, Mar. 2017, doi: 10.1063/1.4978690.
- [6] I. Hwang *et al.*, "p-GaN Gate HEMTs With Tungsten Gate Metal for High Threshold Voltage and Low Gate Current," *IEEE Electron Device Lett.*, vol. 34, no. 2, pp. 202–204, Feb. 2013, doi: 10.1109/LED.2012.2230312.
- [7] J. Robertson and B. Falabretti, "Band offsets of high K gate oxides on III-V semiconductors," *J. Appl. Phys.*, vol. 100, no. 1, p. 014111, Jul. 2006, doi: 10.1063/1.2213170.
- [8] T. Hashizume, S. Ootomo, T. Inagaki, and H. Hasegawa, "Surface passivation of GaN and GaN/AlGaIn heterostructures by dielectric films and its application to insulated-gate heterostructure transistors," *J. Vac. Sci. Technol. B Microelectron. Nanometer Struct.*, vol. 21, no. 4, p. 1828, 2003, doi: 10.1116/1.1585077.
- [9] W. Yang, T. Ohba, S. Tan, K. J. Kanarik, J. Marks, and K. Nojiri, "Atomic Layer Etching of GaN and Other III-V Materials," US 2016/0358782 A1, 2016.
- [10] D. Buttari *et al.*, "Systematic characterization of Cl_2 reactive ion etching for improved ohmics in AlGaIn/GaN HEMTs," *IEEE Electron Device Lett.*, vol. 23, no. 2, pp. 76–78, Feb. 2002, doi: 10.1109/55.981311.
- [11] D. Buttari *et al.*, "Origin of etch delay time in Cl_2 dry etching of AlGaIn/GaN structures," *Appl. Phys. Lett.*, vol. 83, no. 23, pp. 4779–4781, Dec. 2003, doi: 10.1063/1.1632035.
- [12] G. Greco, F. Iucolano, and F. Roccaforte, "Review of technology for normally-off HEMTs with p-GaN gate," *Mater. Sci. Semicond. Process.*, vol. 78, pp. 96–106, May 2018, doi: 10.1016/j.mssp.2017.09.027.
- [13] Z. Gao, M. F. Romero, and F. Calle, "Etching of AlGaIn/GaN HEMT structures by Cl_2 -based ICP," p. 4.
- [14] Y. Han *et al.*, "Nonselective and smooth etching of GaN/AlGaIn heterostructures by $\text{Cl}_2/\text{Ar}/\text{BCl}_3$ inductively coupled plasmas," *J. Vac. Sci. Technol. Vac. Surf. Films*, vol. 22, no. 2, pp. 407–412, Mar. 2004, doi: 10.1116/1.1641054.
- [15] G. Levitin, C. Timmons, and D. W. Hess, "Photoresist and Etch Residue Removal," *J. Electrochem. Soc.*, vol. 153, no. 7, p. G712, 2006, doi: 10.1149/1.2203096.